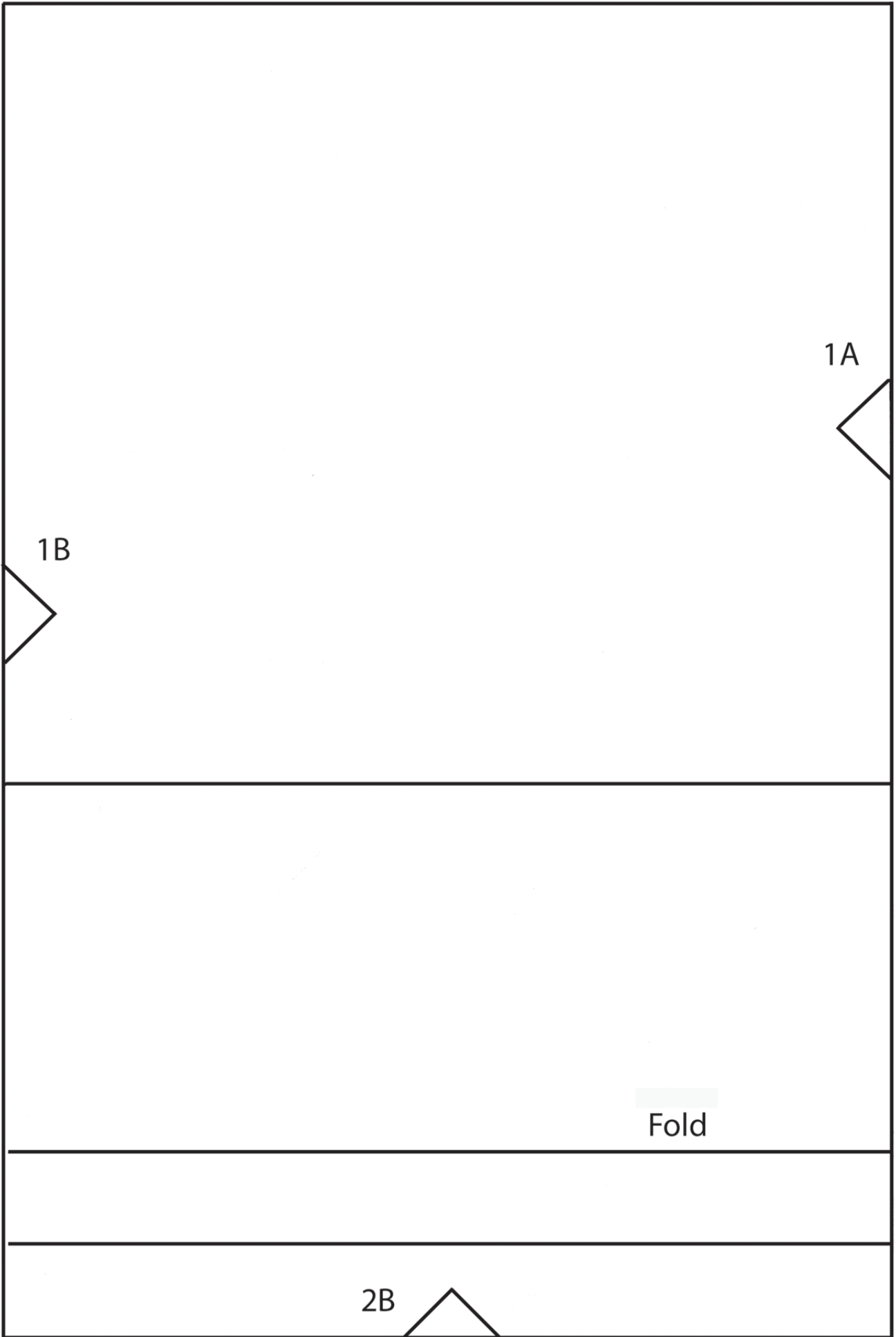


2A

Hem

1A

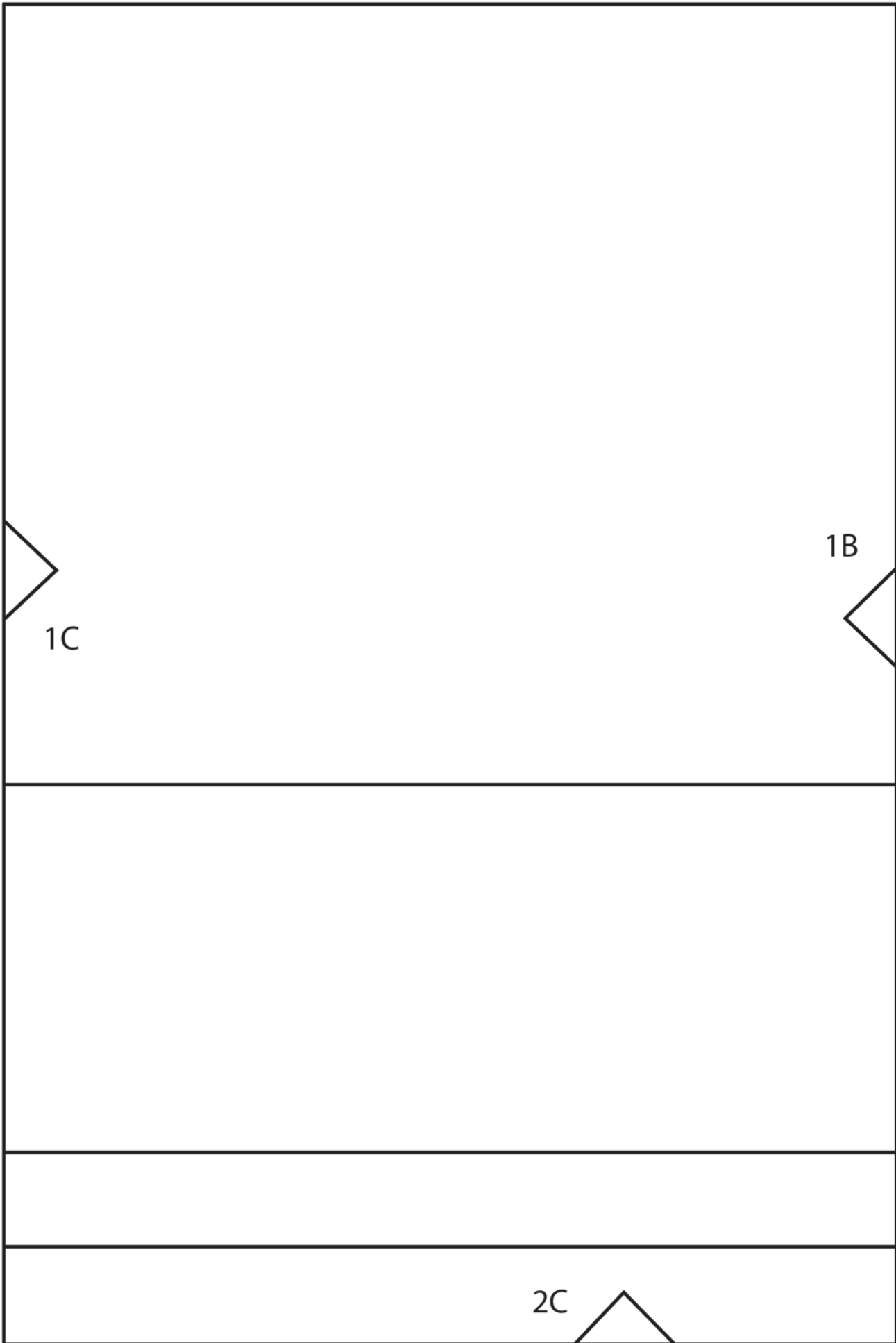


1A

1B

Fold

2B



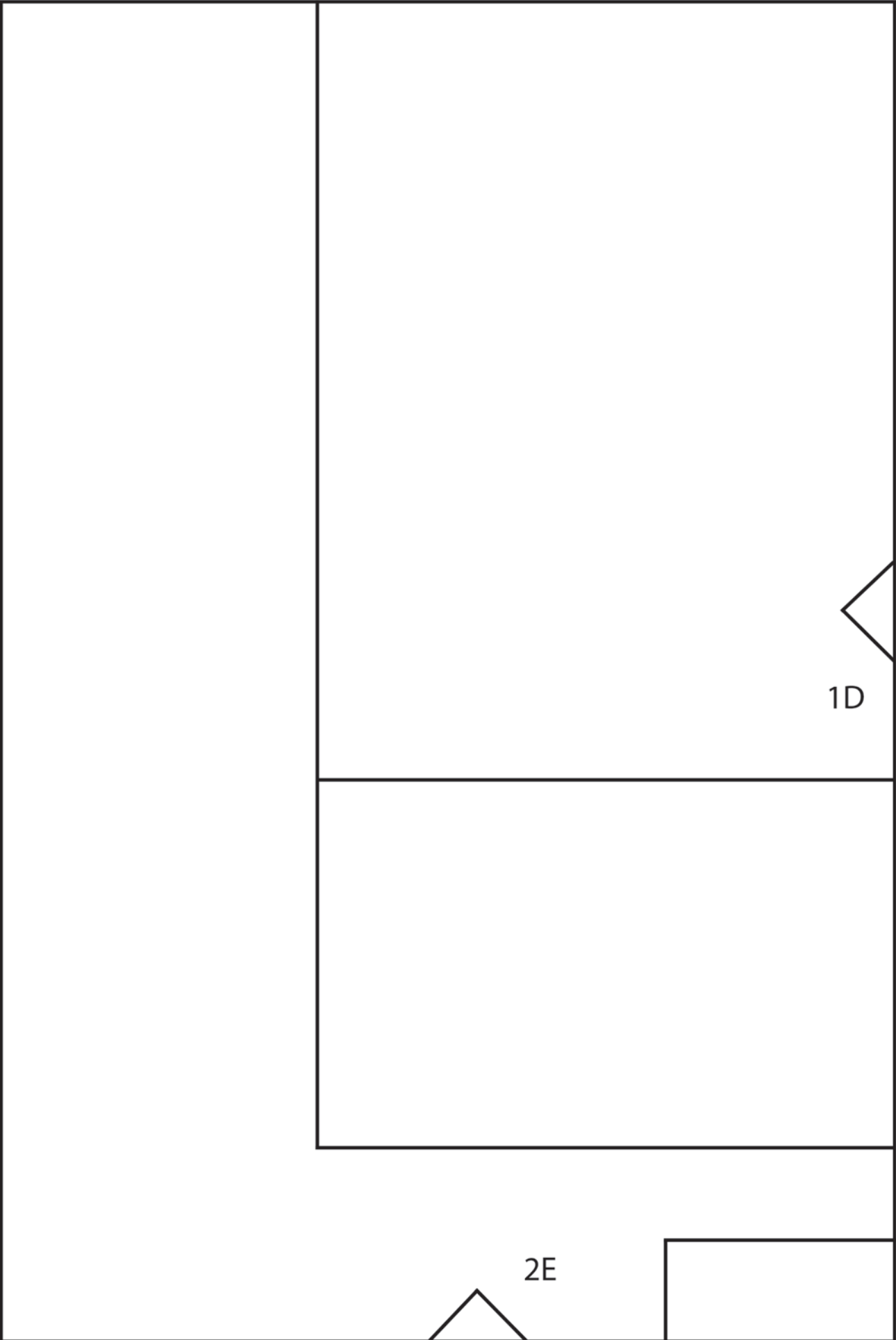
Burda *style*
open source sewing
www.BurdaStyle.com

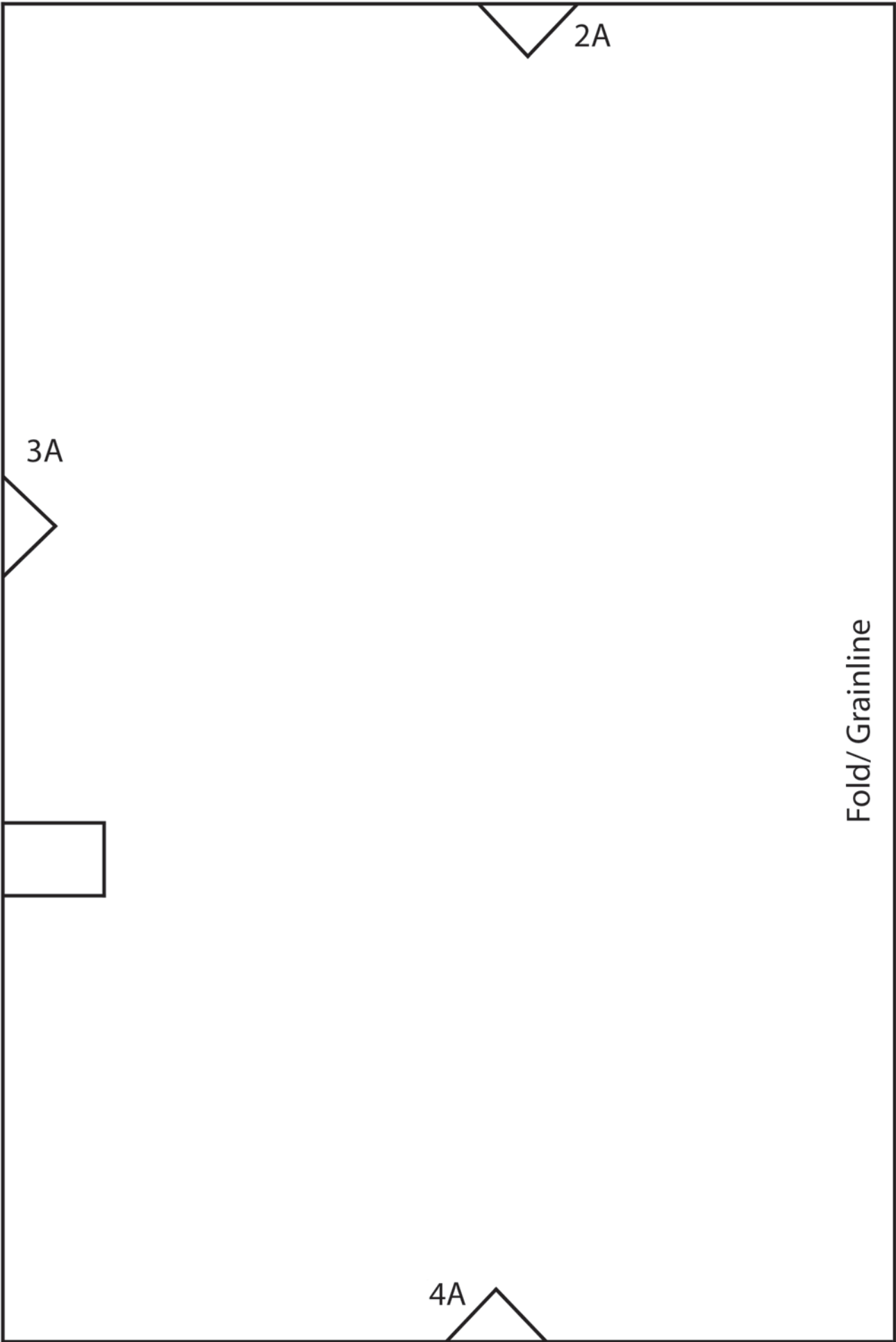
Side Panel
Cut 2 on fold

1D

1C

2D



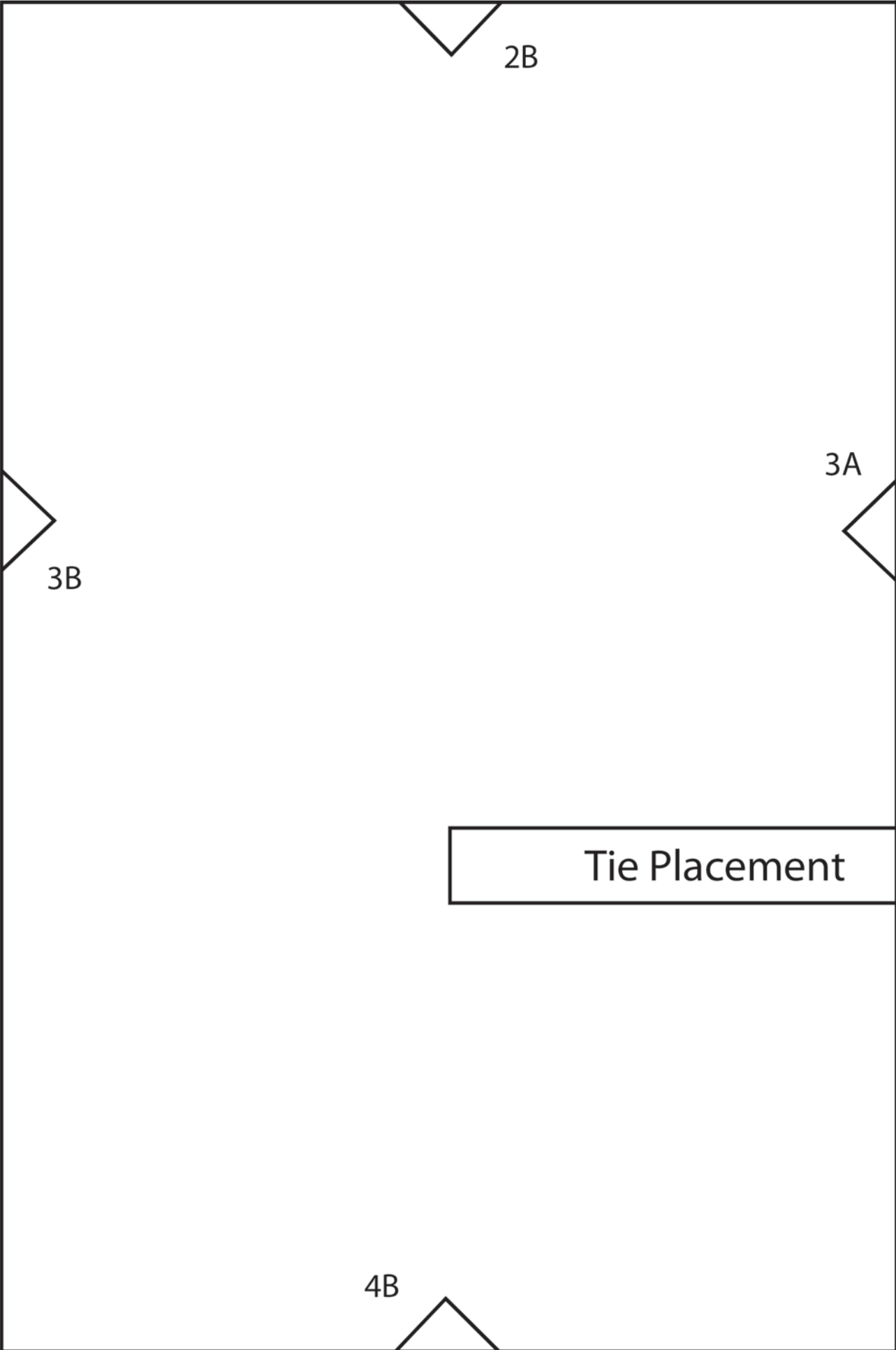


2A

3A

4A

Fold/ Grainline



2B

3A

3B

Tie Placement

4B



2C

3C

3B

Burda *style*

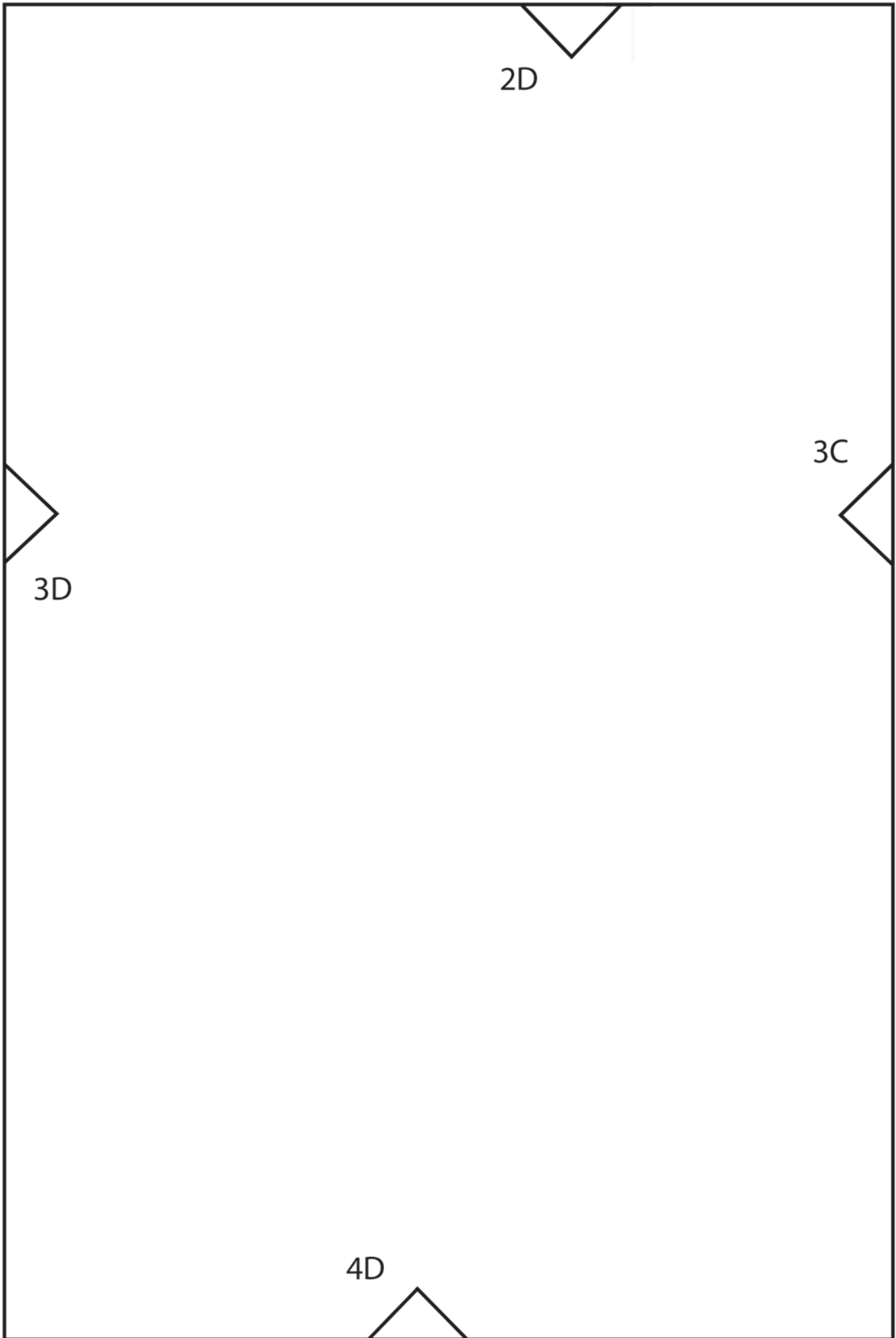
open source sewing

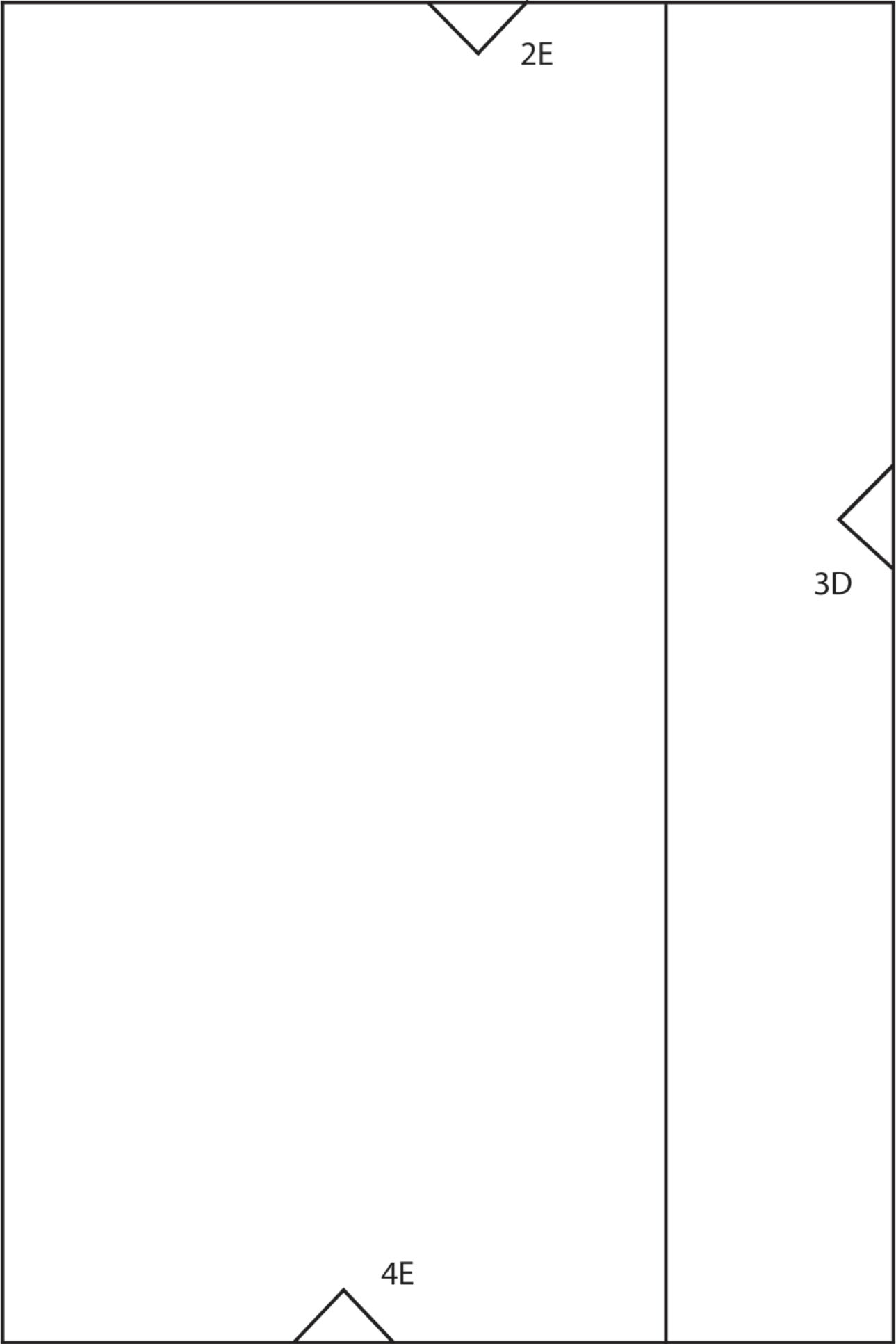
www.BurdaStyle.com

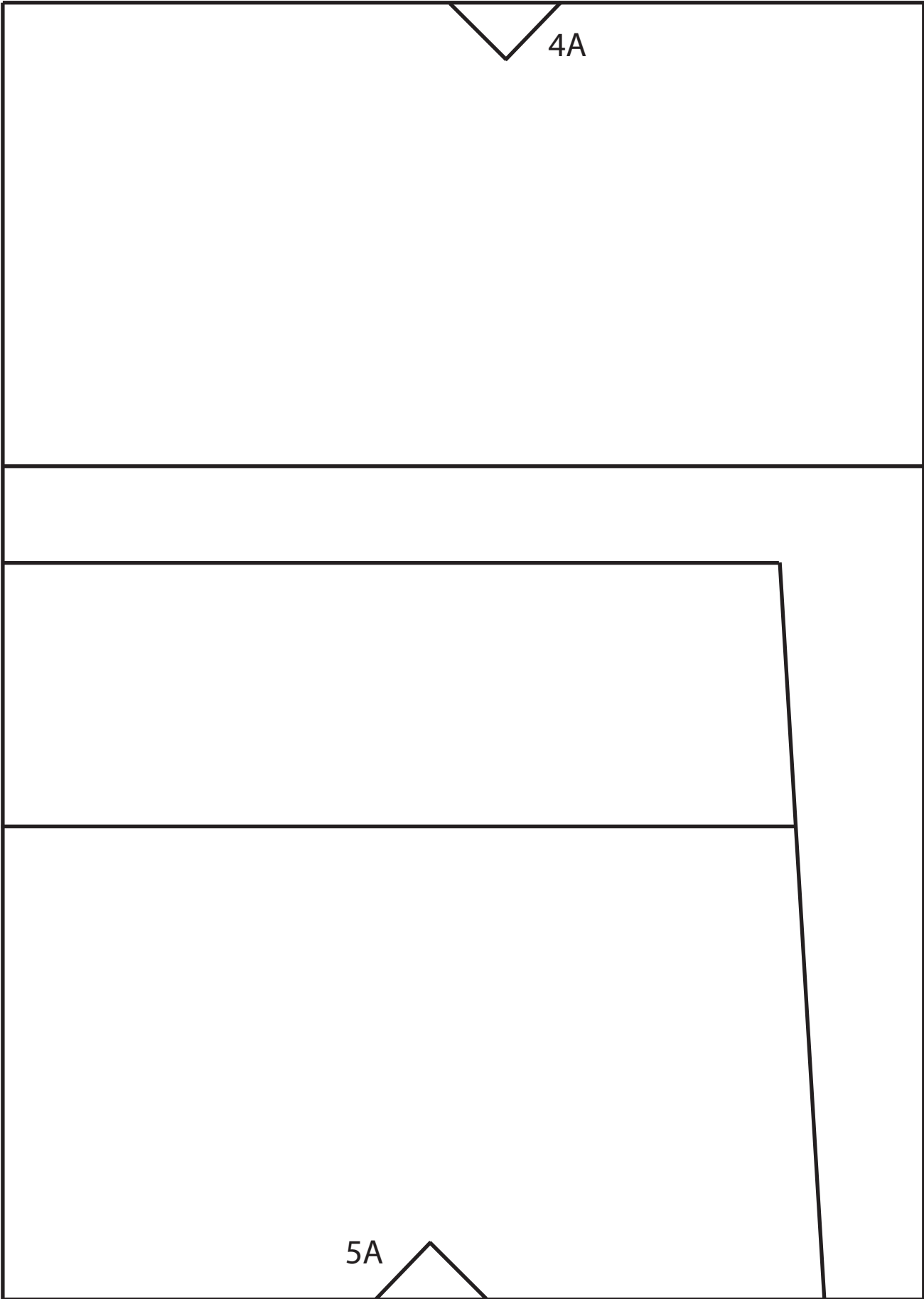
Waistband

Cut 1 on fold

4C









4B

Grainline



5B

4C



Burda *style*

open source sewing

www.BurdaStyle.com

Curved Back + Front

Cut 2

5D





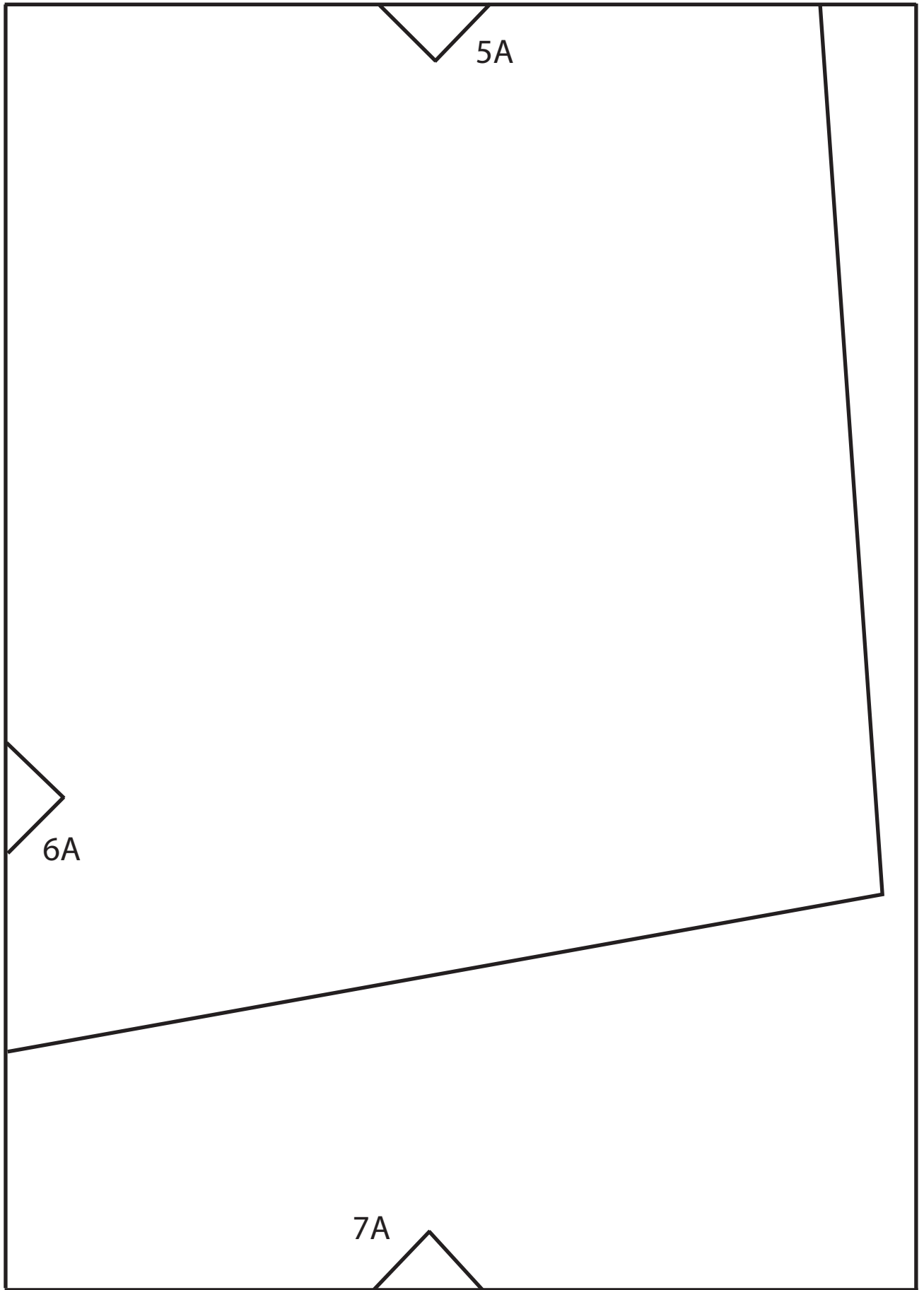
4D

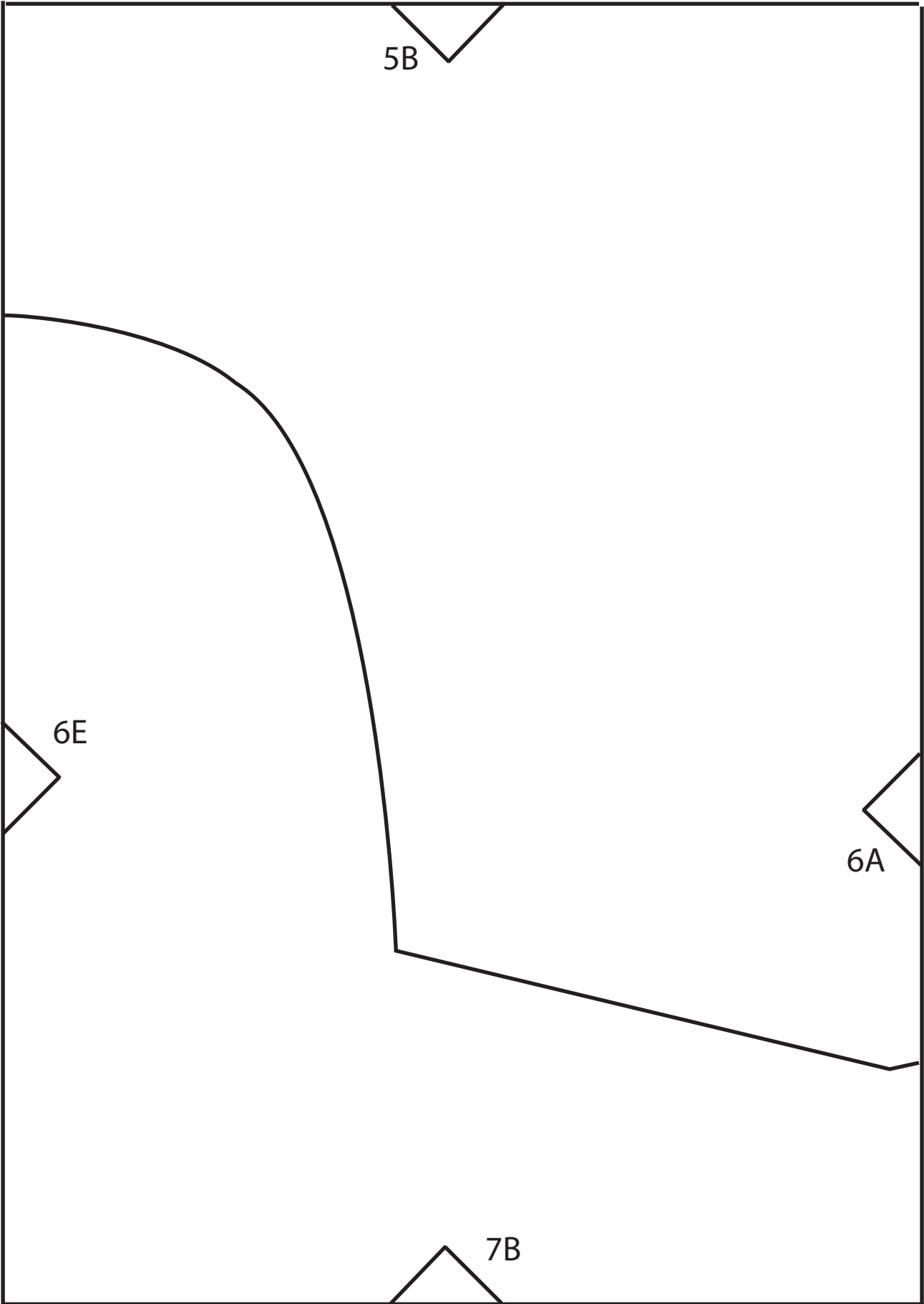


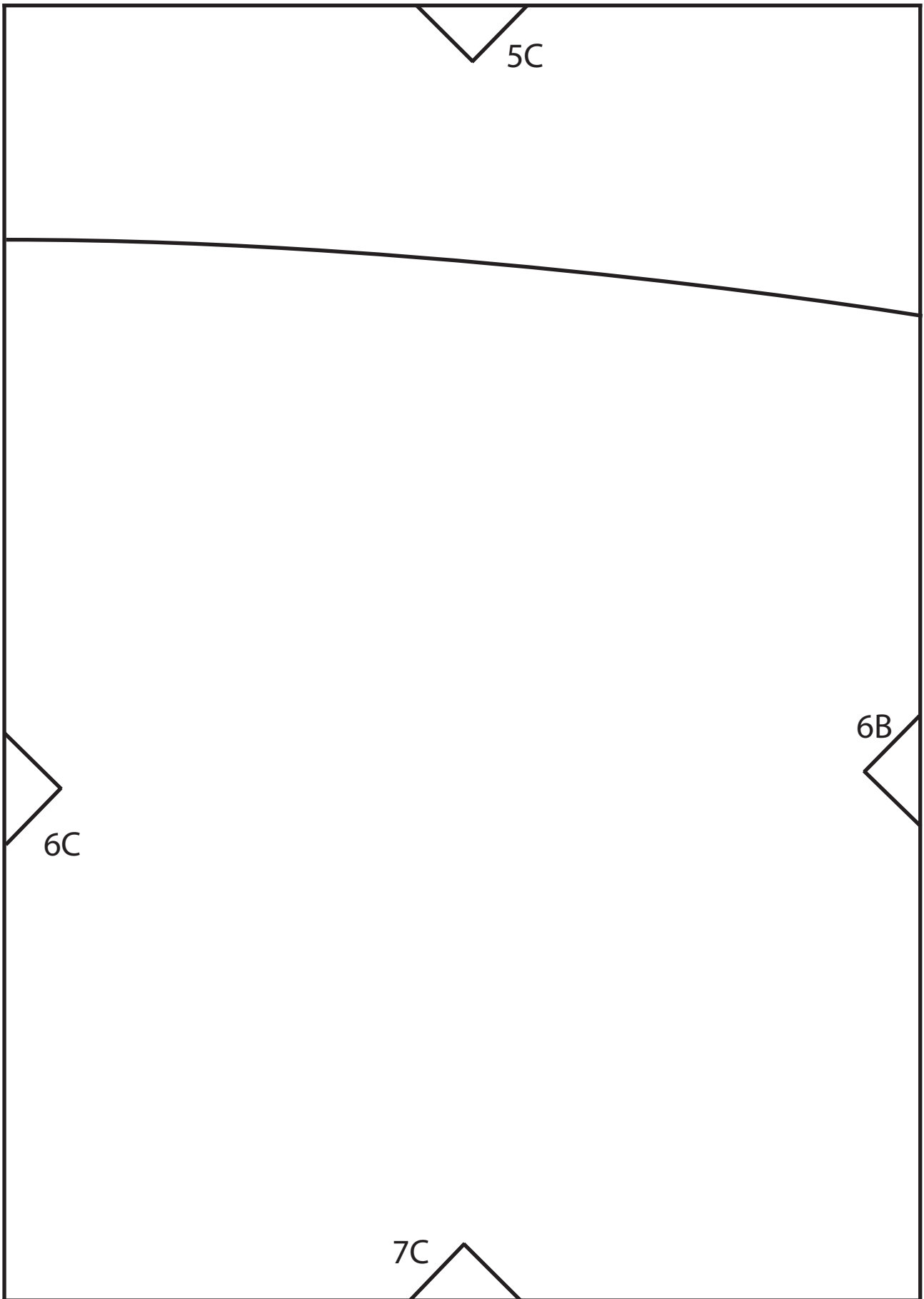
5D

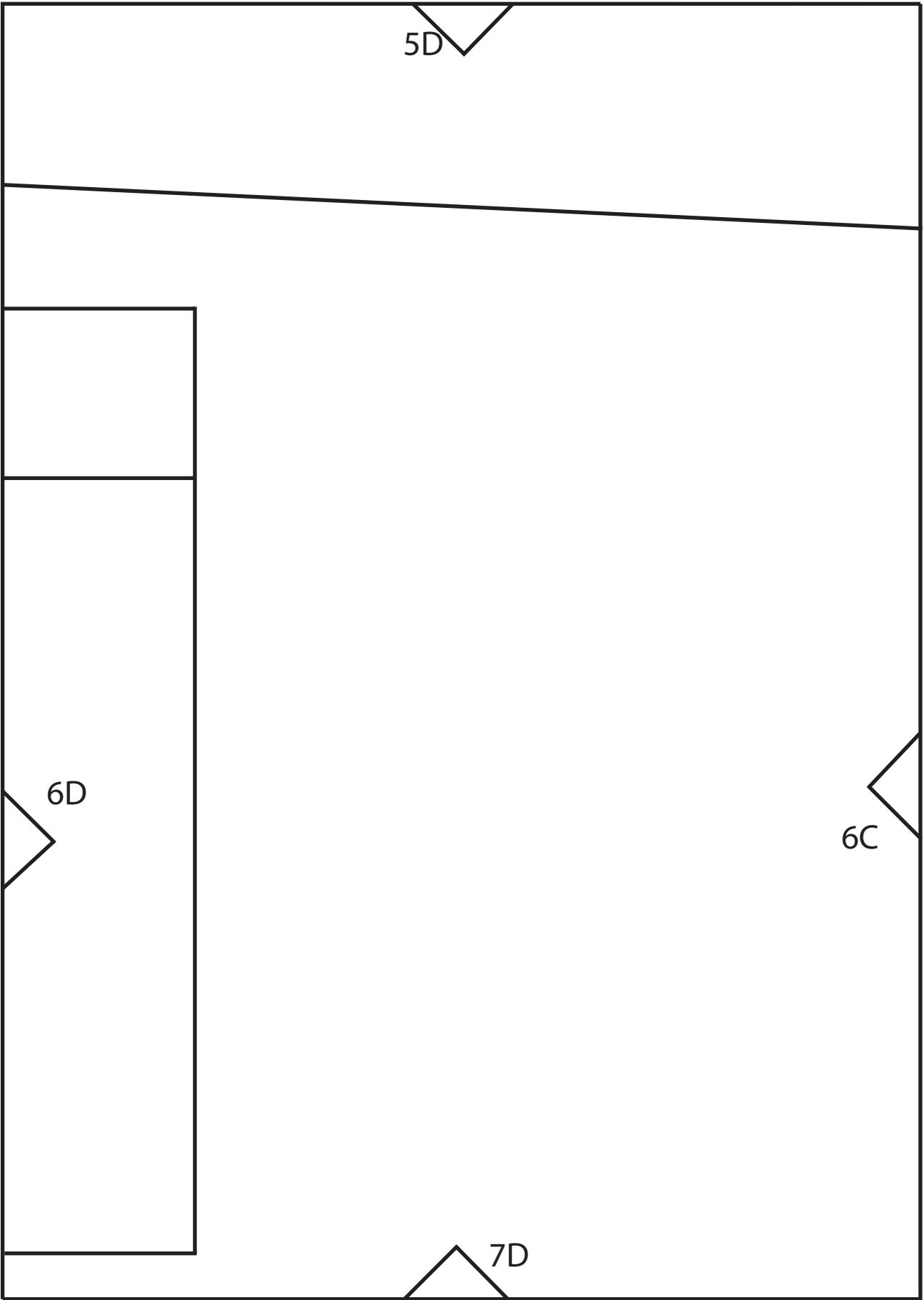
4E

5E









5D

6D

6C

7D

5E

Grainline

Burda *style*

open source sewing

www.BurdaStyle.com

Pocket

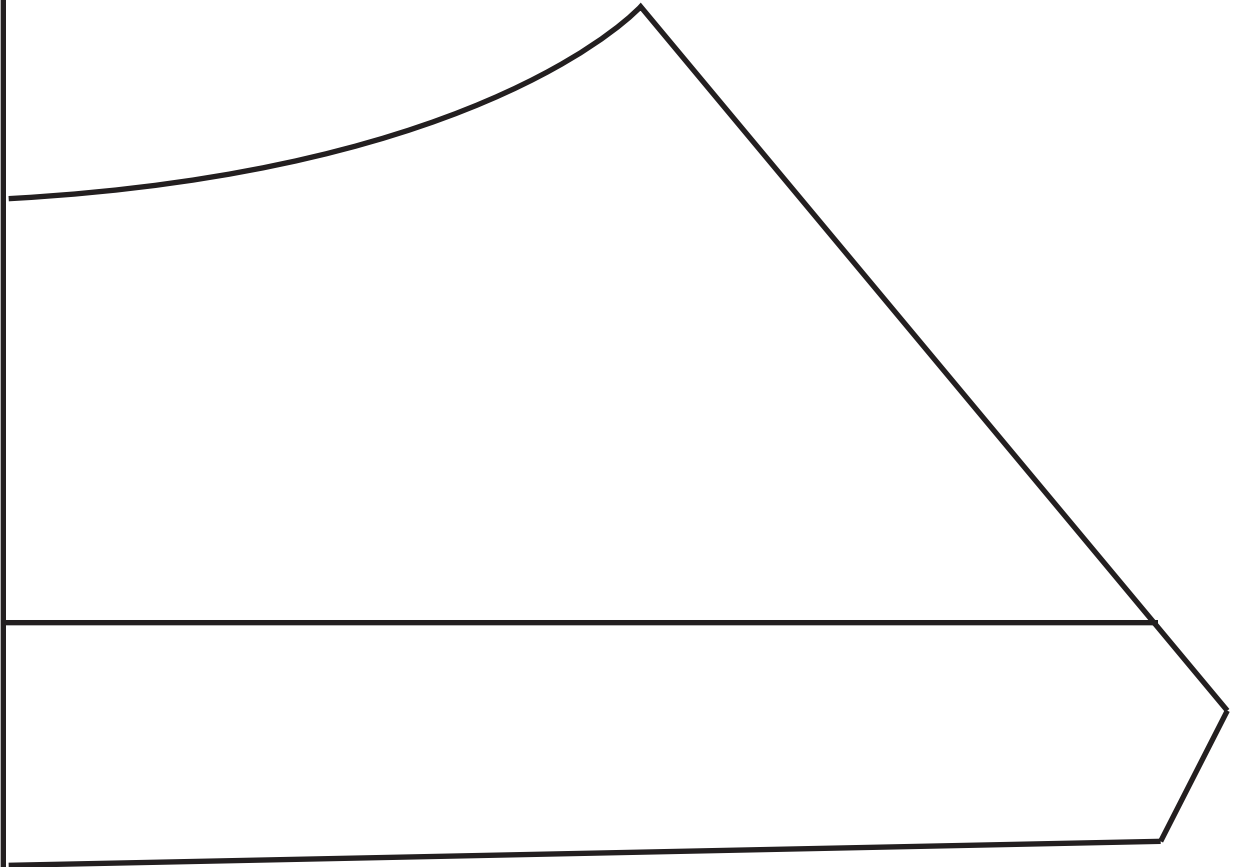
Cut 1

6C

Fold



7A



8A



7B

Burdastyle

open source sewing

www.BurdaStyle.com

Crotch Piece

Cut 2

Grainline

8B

8A



7C



8C



8B

Fold/ Grainline

7D

Hem

8D

8C

Cut 2

Tie

Burda *style*

open source sewing

www.BurdaStyle.com

Thai Pant

One Size

5/8" Seam Allowances

Test Square

4" x 4"

10cm x 10 cm

8D

